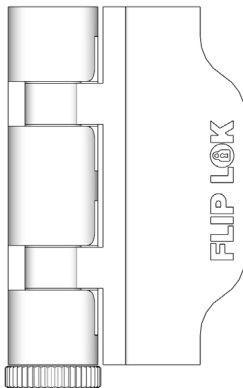
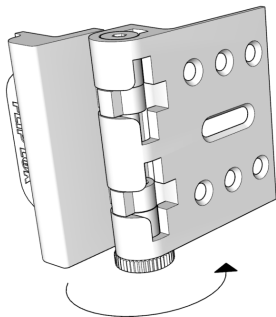


# FLIP LOK

## INSTRUCTIONS

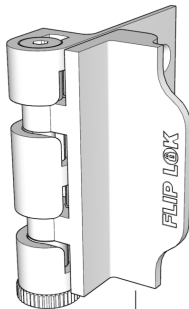


## UNLOCKED AND LOCKED POSITIONS

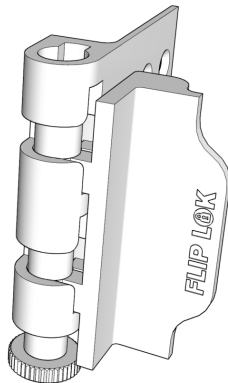


1. FLIP

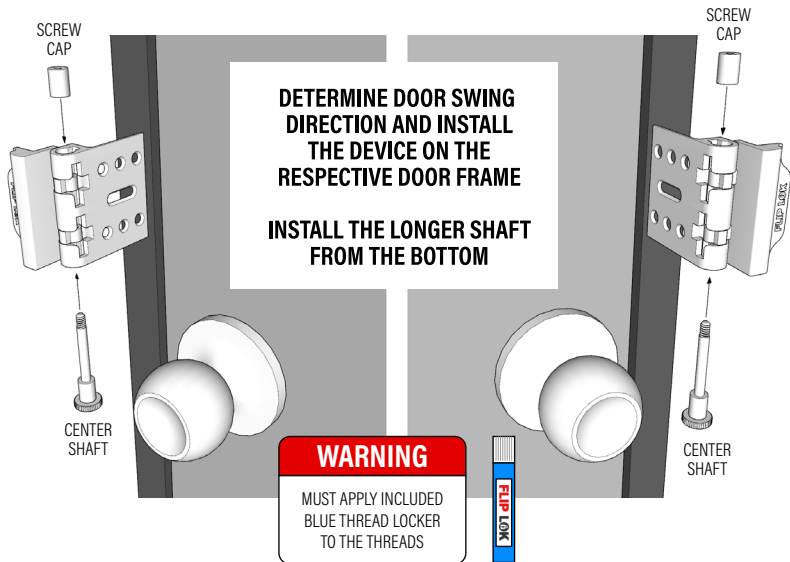
UNLOCKED



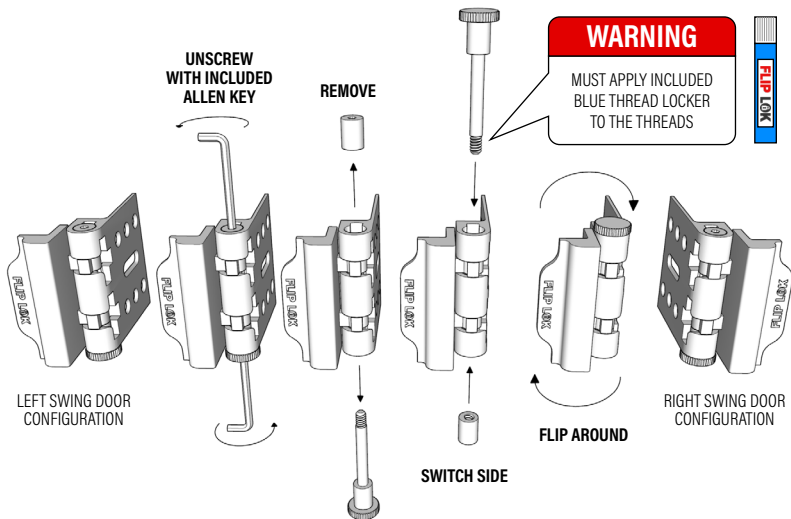
2. DROP



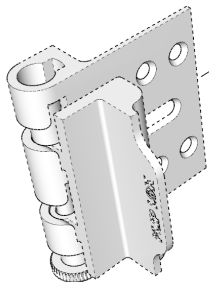
LOCKED



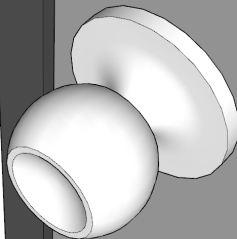
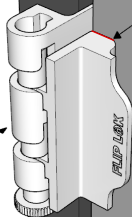
# TO CHANGE BETWEEN LEFT AND RIGHT SWING CONFIGURATION



**INSERT LOCK BETWEEN  
THE DOOR AND THE DOOR FRAME**

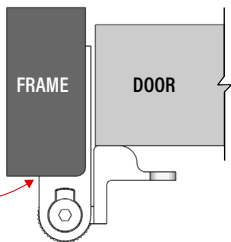


**MAKE SURE IT SITS FLUSH  
AGAINST THE DOOR**

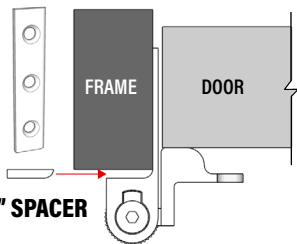


**DEPENDING ON THICKNESS OF YOUR DOOR AND DOOR FRAME  
FILL THE GAP ACCORDINGLY WITH INCLUDED SPACERS**

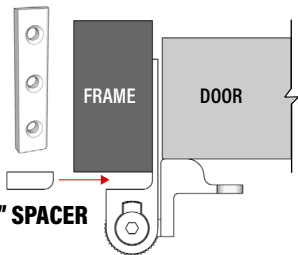
**NO GAP**  
SPACER NOT  
REQUIRED



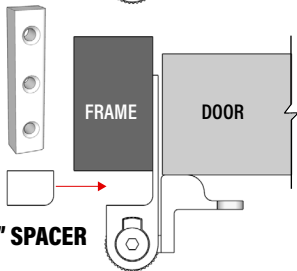
**1/8" SPACER**

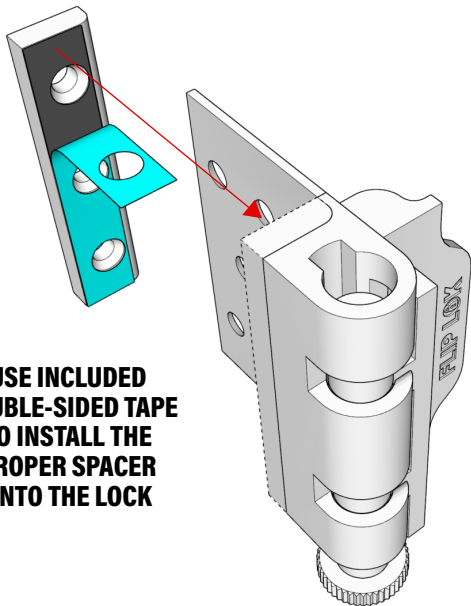


**1/4" SPACER**



**1/2" SPACER**

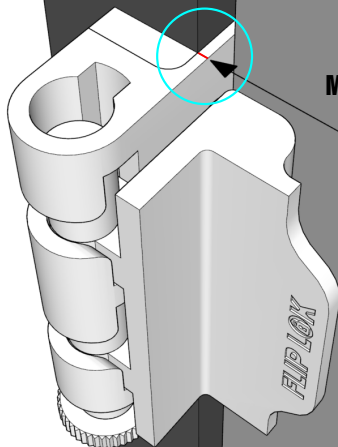




**USE INCLUDED  
DOUBLE-SIDED TAPE  
TO INSTALL THE  
PROPER SPACER  
ONTO THE LOCK**

**DOOR FRAME**

**DOOR**



**MARK WHERE THE LOCK  
ALIGNS WITH THE  
DOOR FRAME**

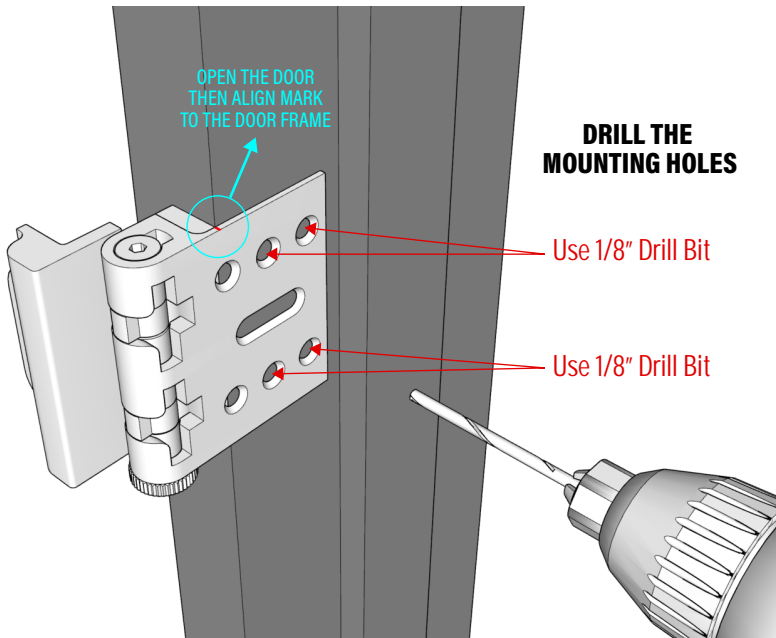


OPEN THE DOOR  
THEN ALIGN MARK  
TO THE DOOR FRAME

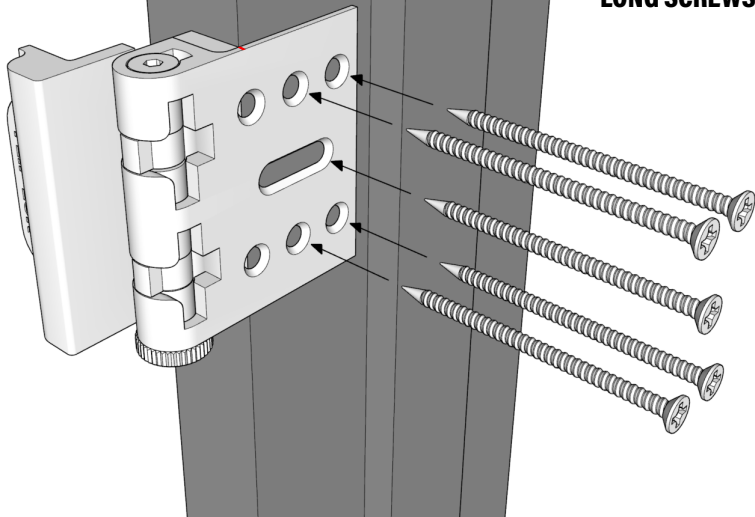
## DRILL THE MOUNTING HOLES

Use 1/8" Drill Bit

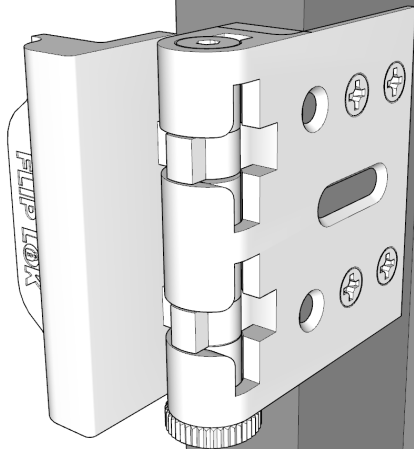
Use 1/8" Drill Bit



**INSTALL 4X  
LONG SCREWS**



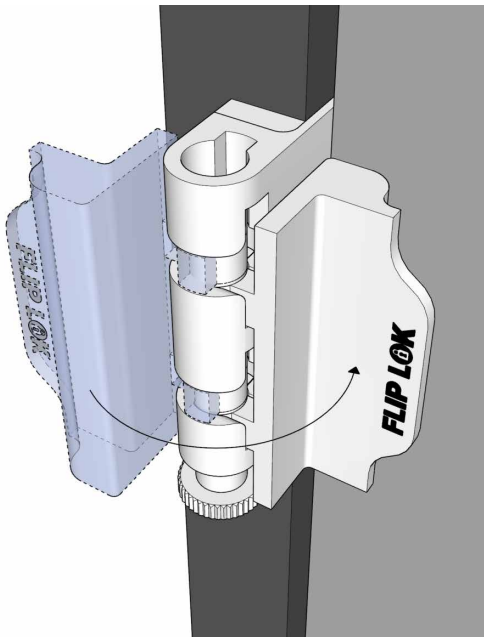
**INSTALLATION  
COMPLETE**



**WITH A SIMPLE FLIP  
OF THE LATCH**

**IT DROPS  
IT LOCKS**

**NOW YOUR HOME  
IS SECURED**





**[www.FlipLok.com/pages/installation](http://www.FlipLok.com/pages/installation)**

For more info and videos on installation